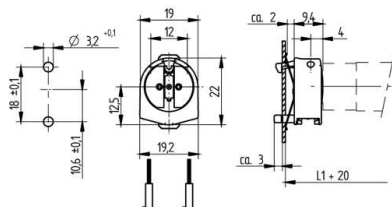


 Create pdf

Lampholders and starter holders

26.641.2004

G5 End fixing lampholders



L1+20: Recommended dimension is based on use of one lampholder with and one lampholder without spring. The final distance should be governed by the dimensions of the respective lamps and luminaires.

colour	pkg.	wt.	part no.
white	1000	3 g	26.641.2004.50

Approval: additional cULus (120W / 600V)

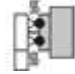




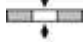
Wiring: through the body

Snap in pins with spring vertical

Housing: PC

Rotor: PBT

- A pair of lampholders provides a lamp length tolerance compensation of 2 mm

T 130	Tm 110					 18 AWG 0.5 - 1.0 mm ²	 0.6 - 1.0
-------	--------	---	---	---	--	--	--

Document generated on: Mo, 6. February 2017 - 11:49